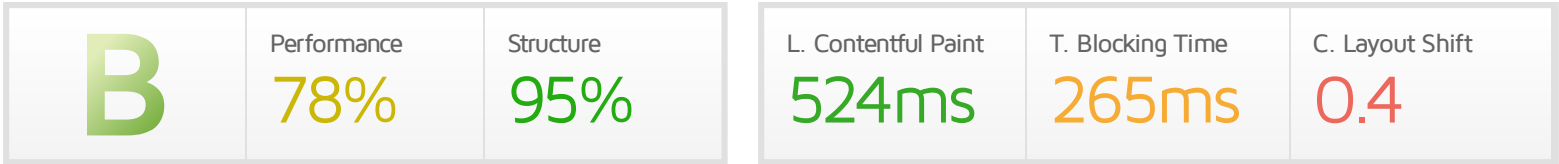




# Performance Report for: <https://grailwp.co/>

Report generated: Thu, Oct 7, 2021 12:14 AM -0700  
 Test Server Location: 🇺🇸 Danville, VA, USA  
 Using: 🌐 Chrome (Desktop) 90.0.4430.212, Lighthouse 8.3.0



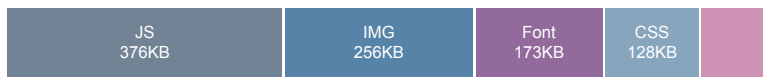
## Top Issues

IMPACT	AUDIT	
Med	Avoid large layout shifts	5 elements found
Med-Low	Avoid an excessive DOM size	1,238 elements
Med-Low	Lazy load third-party resources with facades	1 facade alternative available
Low	Eliminate render-blocking resources	Potential savings of 123ms
Low	Serve static assets with an efficient cache policy	Potential savings of 20.7KB

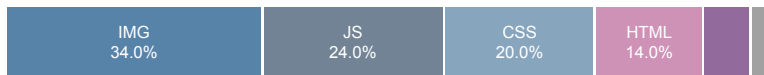
## Page Details



Total Page Size - 0.99MB



Total Page Requests - 50



### How does this affect me?

Today's web user expects a fast and seamless website experience. Delivering that fast experience can result in increased visits, conversions and overall happiness.

As if you didn't need more incentive, **Google has announced that they are using page speed in their ranking algorithm.**

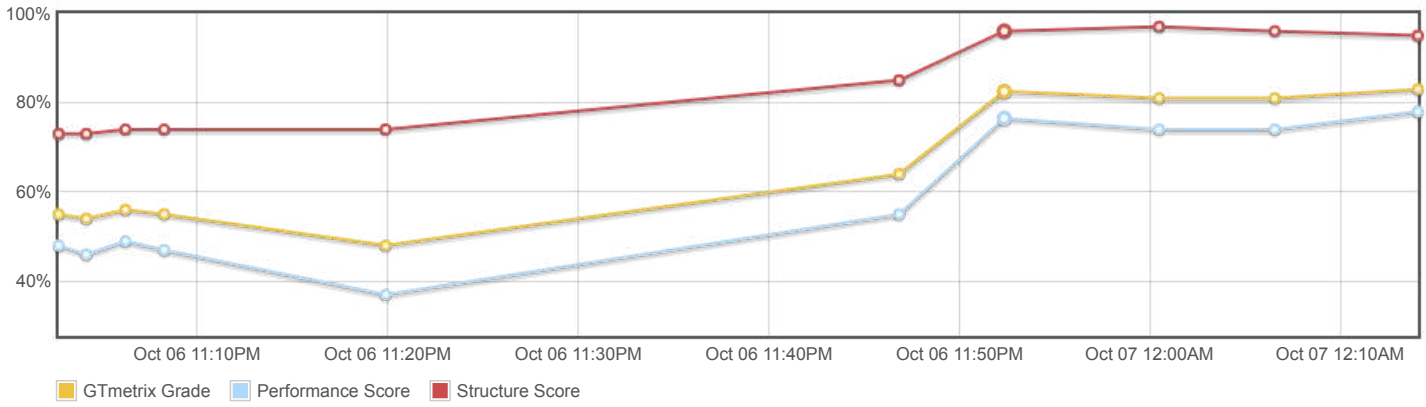
### About GTmetrix



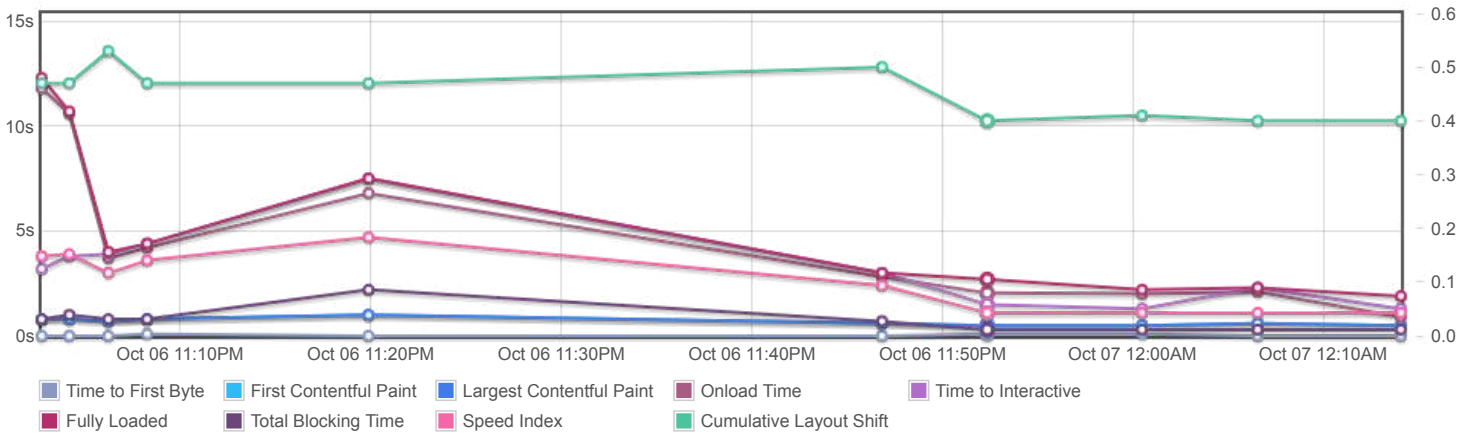
GTmetrix is developed by the good folks at Carbon60, a Canadian hosting company with over 25 years experience in web technology.

<https://carbon60.com/>

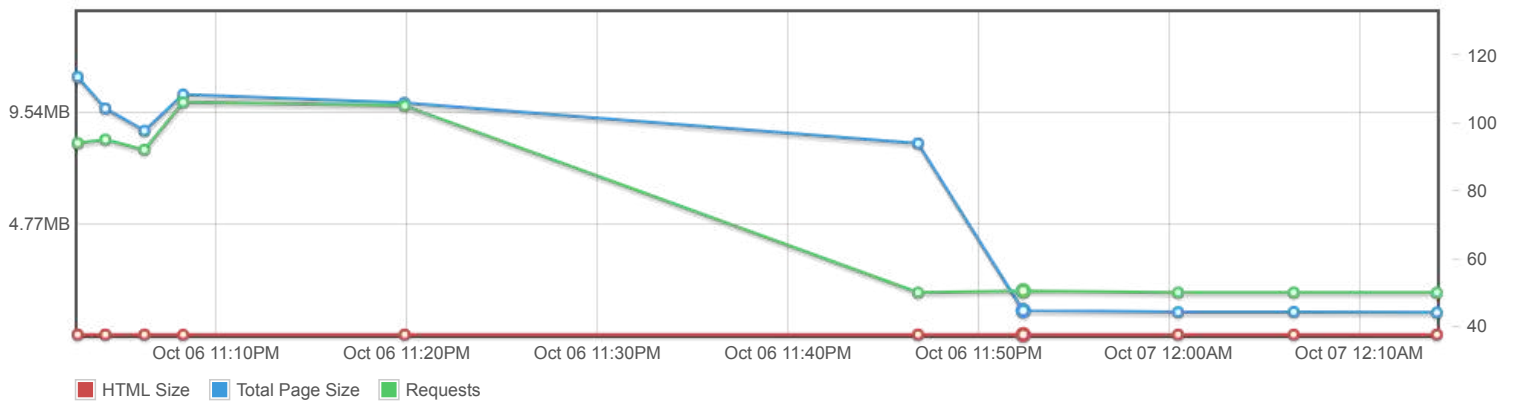
Page scores



Page metrics

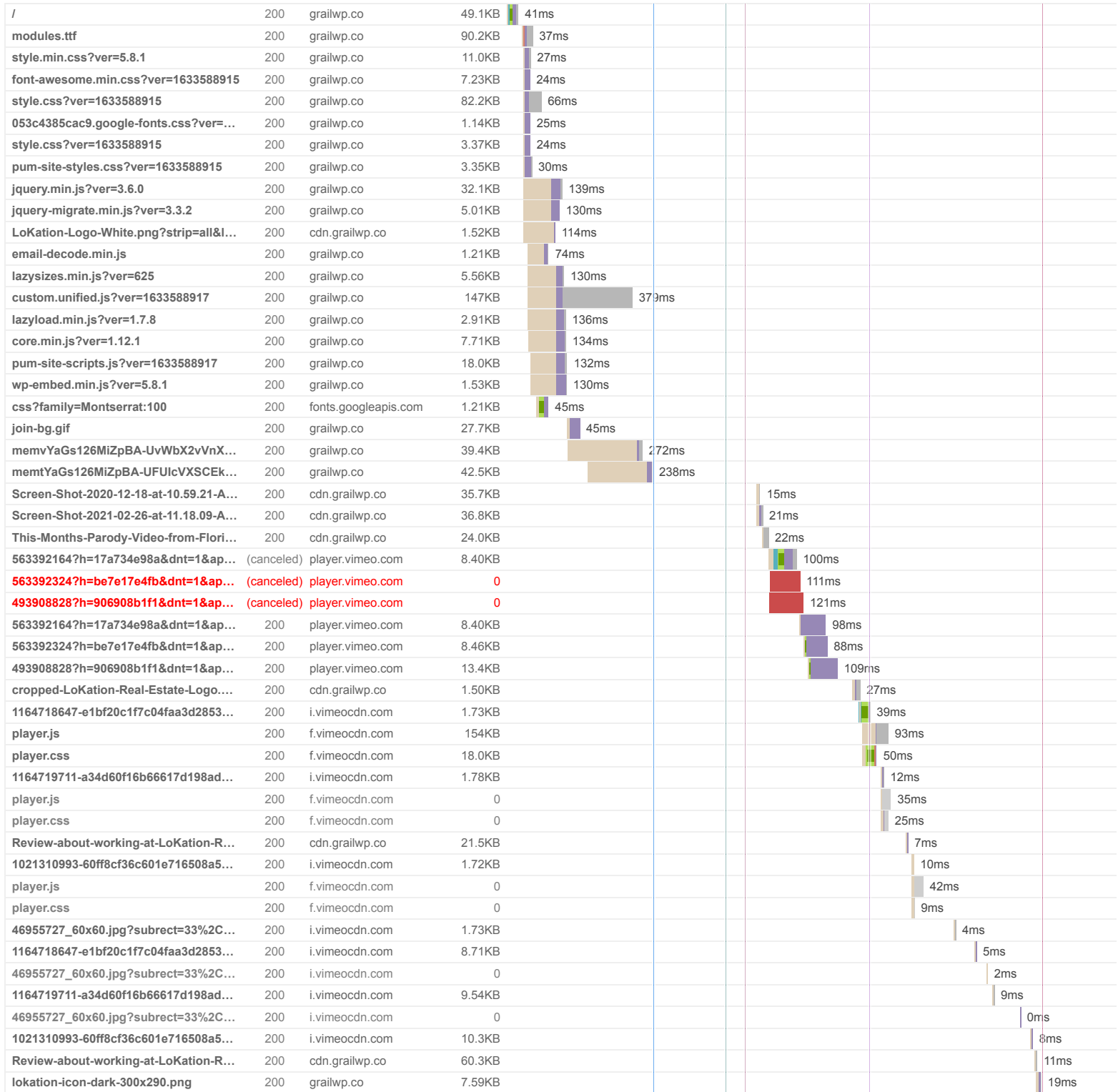


Page sizes and request counts



The waterfall chart displays the loading behaviour of your site in your selected browser. It can be used to discover simple issues such as 404's or more complex issues such as external resources blocking page rendering.

Florida's 100% Commission Real Estate | LoKation® Real Estate



50 Requests    0.99MB (4.95MB Uncompressed)    Fully Loaded 1.9s (Onload 860ms)



### Performance Metrics

<p><b>First Contentful Paint</b></p> <p>How quickly content like text or images are painted onto your page. A good user experience is 0.9s or less.</p>	<p>Good - Nothing to do here</p> <p><b>524ms</b></p>	<p><b>Time to Interactive</b></p> <p>How long it takes for your page to become fully interactive. A good user experience is 2.5s or less.</p>	<p>Good - Nothing to do here</p> <p><b>1.3s</b></p>
<p><b>Speed Index</b></p> <p>How quickly the contents of your page are visibly populated. A good user experience is 1.3s or less.</p>	<p>Good - Nothing to do here</p> <p><b>1.1s</b></p>	<p><b>Total Blocking Time</b></p> <p>How much time is blocked by scripts during your page loading process. A good user experience is 150ms or less.</p>	<p>Longer than recommended</p> <p><b>265ms</b></p>
<p><b>Largest Contentful Paint</b></p> <p>How long it takes for the largest element of content (e.g. a hero image) to be painted on your page. A good user experience is 1.2s or less.</p>	<p>Good - Nothing to do here</p> <p><b>524ms</b></p>	<p><b>Cumulative Layout Shift</b></p> <p>How much your page's layout shifts as it loads. A good user experience is a score of 0.1 or less.</p>	<p>Much more than recommended</p> <p><b>0.4</b></p>

### Browser Timings

Redirect	0ms	Connect	19ms	Backend	13ms
TTFB	32ms	First Paint	524ms	DOM Int.	548ms
DOM Loaded	788ms	Onload	860ms	Fully Loaded	1.9s

IMPACT	AUDIT	
Med	<b>Avoid large layout shifts</b>	5 elements found
Med-Low	<b>Avoid an excessive DOM size</b>	1,238 elements
Med-Low	<b>Lazy load third-party resources with facades</b>	1 facade alternative available
Low	<b>Eliminate render-blocking resources</b>	Potential savings of 123ms
Low	<b>Serve static assets with an efficient cache policy</b>	Potential savings of 20.7KB
Low	<b>Reduce unused CSS</b>	Potential savings of 89.9KB
Low	<b>Reduce unused JavaScript</b>	Potential savings of 82.0KB
Low	<b>Reduce JavaScript execution time</b>	507ms spent executing JavaScript
Low	<b>Avoid enormous network payloads</b>	Total size was 0.99MB
Low	<b>Properly size images</b>	Potential savings of 6.59KB
Low	<b>Avoid long main-thread tasks</b>	6 long tasks found
Low	<b>Serve images in next-gen formats</b>	Potential savings of 94.3KB
Low	<b>Reduce initial server response time</b>	Root document took 13ms
Low	<b>Avoid serving legacy JavaScript to modern browsers</b>	Potential savings of 10.0KB
Low	<b>Avoid non-composited animations</b>	30 animated elements found
Low	<b>Avoid chaining critical requests</b>	8 chains found
N/A	<b>Largest Contentful Paint element</b>	1 element found
N/A	<b>Minimize main-thread work</b>	Main-thread busy for 2.2s
N/A	<b>Reduce the impact of third-party code</b>	Total size was 244KB
N/A	<b>User Timing marks and measures</b>	